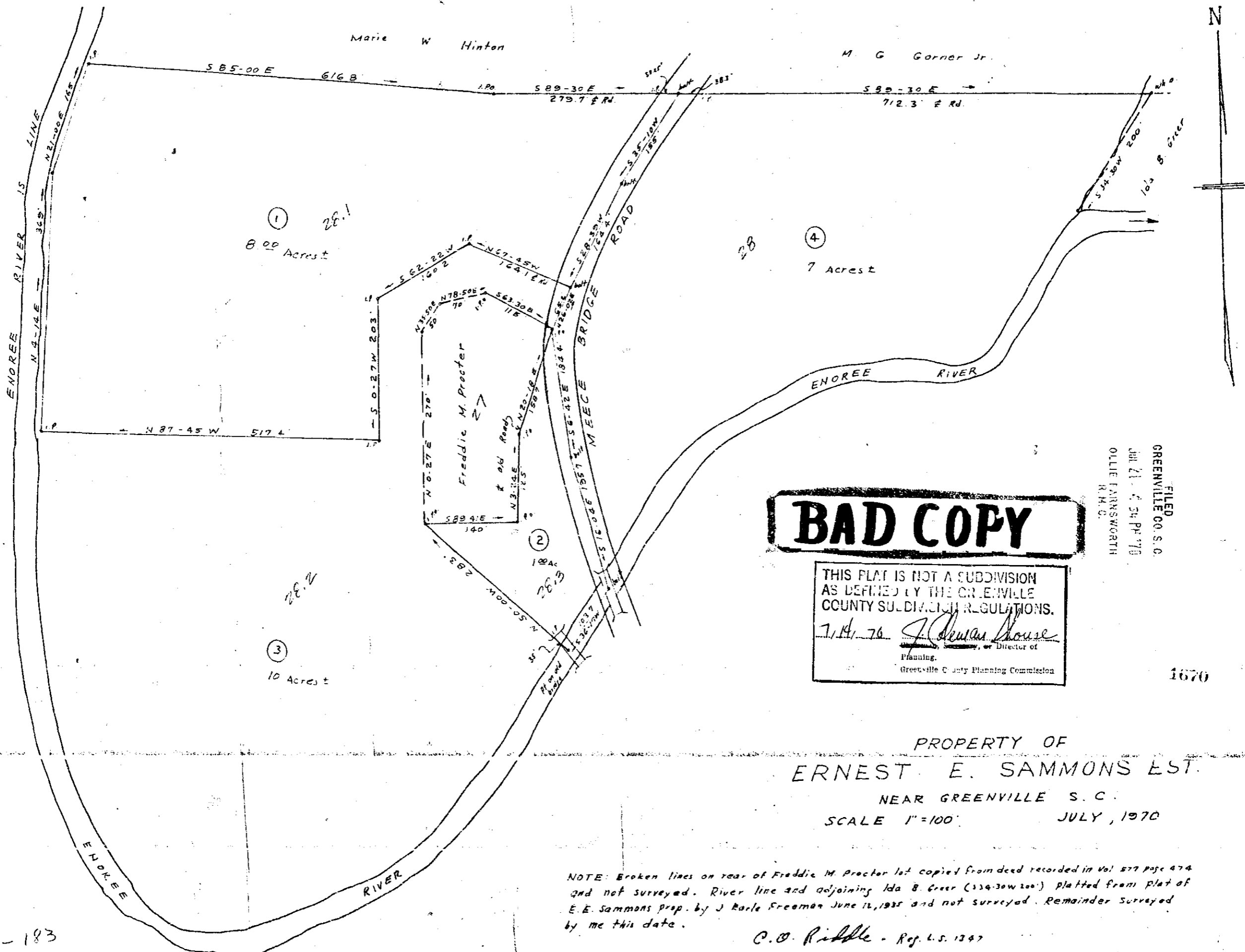


7 1670 Filed This 21 day of July 1970  
 And Recorded in Vol. UUU Page 183 at 4.54 P.  
 Ollie Farnsworth  
 Register of Deeds Greenville County, S. C.

# Plat Book-UUU-Page 183



**BAD COPY**

THIS PLAT IS NOT A SUBDIVISION  
 AS DEFINED BY THE GREENVILLE  
 COUNTY SUBDIVISION REGULATIONS.  
 7/14/70 J. Charles House  
 Director of  
 Planning,  
 Greenville County Planning Commission

FILED  
 GREENVILLE CO. S. C.  
 JUL 21 4 54 PM '70  
 OLLIE FARNSWORTH  
 R. M. C.

1670

PROPERTY OF  
 ERNEST E. SAMMONS EST.  
 NEAR GREENVILLE S. C.  
 SCALE 1"=100' JULY, 1970

NOTE: Broken lines on rear of Freddie M. Procter lot copied from deed recorded in Vol 579 page 474 and not surveyed. River line and adjoining Ida B. Greer (334-30W 200') platted from plat of E. E. Sammons prep. by J. Rarle Freeman June 12, 1935 and not surveyed. Remainder surveyed by me this date.

C. O. Riddle - Reg. L.S. 1397

125  
 UUU-183